



The Foundation

SEPTA: Wayne Train Station

A&E Construction Co. completed improvements and renovations to the Wayne Train Station in Wayne, Pennsylvania, as contracted by SEPTA. The three phased, multi-year project involved construction of Amtrak's new storage yard; new inbound and outbound high level platforms; and the demolition and construction of new inbound and outbound low level platforms. Multiple improvements to the historical station building included roof replacement, toilet room renovations, ticket office upgrades, ADA compliance, and pedestrian tunnel rehabilitation. Throughout all phases of construction there was no disruption to the SEPTA commuter rail lines or the AMTRAK Northeast corridor traffic. This was A&E's seventh project with SEPTA in the past four years, and we are currently working in Doylestown.



A&E Completes Second Super 8 Motel

The Super 8, Pennsville, officially opened for business in June 2010. A&E Construction Co. was the General Contractor of this new 50,000+ SF, 4-story motel with 102 guest rooms in New Jersey. It is located along Route 49, just off the Exit 1 interchange of the New Jersey Turnpike/Interstate 295, near the Delaware Memorial Bridge.

Construction included masonry and wood stud bearing walls, I-joist wood flooring systems, and wood roof trusses. The exterior was constructed using an Exterior Insulation Finishing System (EIFS). In addition, the project's scope involved managing the site work construction for Delco Development for the hotel portion of the site as well as the entire eight acre development.

A&E has completed over 25 projects for Delco Development, including two Super 8 Motels.

Commercial ♦ Education ♦ Healthcare ♦ Municipal ♦ Retail & Hospitality
Volume 15 www.aeconstruction.com Fall 2010

Pennsylvania: 152 Garrett Road, Upper Darby, PA 19082
New Jersey: 201 Haddonfield-Berlin Road, Cherry Hill, NJ 08034

P: 610-449-3152 F: 610-449 6325
P: 856-857-9333 F: 856-857-9334

Spotlight
on

Robert Cerutti

A R C H I T E C T

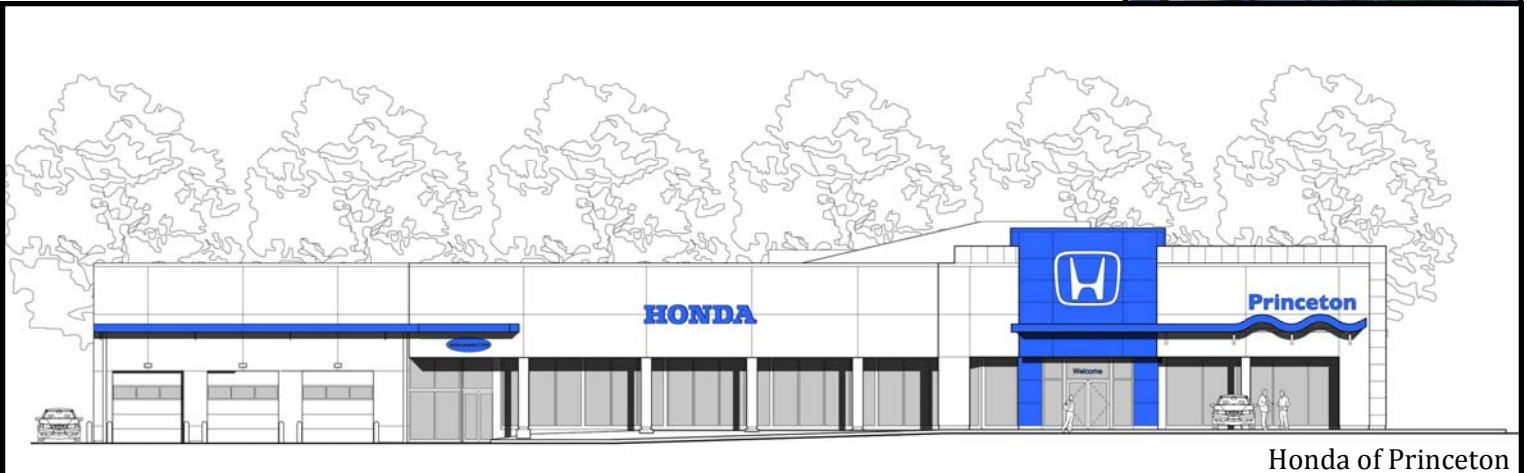
Robert Cerutti Architect is a professional design firm located in Princeton, New Jersey. Established in 1987, the firm provides architectural services for the institutional, commercial and private markets for such diverse clients and projects as: colleges and universities, private schools, automotive dealerships, libraries, laboratories, medical offices, corporate interiors, multi-tenant residential and private residences. Robert Cerutti Architect has considerable experience in the renovation and adaptive re-use of existing buildings, and Historic Preservation.

A&E and Robert Cerutti have teamed up again for the addition and renovations for Honda of Princeton to its dealership. Robert Cerutti designed the new dealership to the new Honda flagship prototype. They used their experience to incorporate the flagship while preserving the structural elements. A&E is serving as Construction Manager and is providing all the mechanical, electrical, plumbing and fire protection design.

The two firms had previously worked together at Princeton University.



Princeton University
Bowen Hall Renovations



Honda of Princeton

Andrew Chain

Estimator



Andy Chain joined A&E Construction Co. in November 2006. He began his career as a Project Engineer and also worked as an Assistant Supervisor and Assistant Project Manager. Andy's field experience helped hone his skills in both hard bidding and conceptual estimating. As Head Estimator of A&E's Upper Darby office, he was the Lead Estimator on numerous hard bid awards such as the SEPTA Wayne Train Station. As a Conceptual Estimator, Andy has led the preconstruction phase from budgets to estimates to GMP and through buyouts for projects such as Upland Square Shopping Center, Tilden Ridge, Lockheed Martin Corporation, and Waterside Village mixed-use development. Andy is a valuable resource to A&E's clients as they call him first to get his opinion on the appropriate construction costs of a project.

Andy earned a B.S. in Civil Engineering from the University of New Hampshire. He and his wife Sarah have a daughter Julia and a son Tyler.

Giant Opens in Springfield

Giant Food Stores celebrated the grand opening in August of its second supermarket built by A&E Construction Co. Located at the intersection of Routes 320 and 420 in Springfield, PA, the 70,400 square foot grocery store was completed in a fast 25 weeks, even through the worst winter conditions in recorded history. A&E will begin construction on a third Giant on Grant Avenue in north-east Philadelphia.



A&E Employs Drexel Co-ops

A&E has partnered with Drexel University's co-op program for the past five years, mentoring students interested in the construction industry. Tom Madonna and Nate Tayoun started as co-ops in 2009 and became part-time employees until their graduation in June 2010. Both have accepted full-time positions at A&E.

Tom, a Project Engineer, reflected on his decision to join the firm. "In many cases, the co-op program is the deciding factor for high school graduates to attend Drexel University. Not only does it allow students to get working experience and some extra cash in their pockets, it bestows upon them a wealth of knowledge and professional life connections. I was once told *it's not what you know, but who you know* and although this may not always be the case, having your foot in the door as a co-op puts you leagues above the competition. After completing my second co-op, I was interested in project management and estimating. The job description for A&E seemed like a perfect fit for my third co-op position. Over the past year I have grown fond of the company and became close with the employees because it is family and friend oriented with a work hard, play hard motto."

Nate, part of the Estimating Team, shared that the office environment at A&E was a deciding factor. "It was a place I could see spending 40+ hours a week without regret. All of the employees, including upper management, made me feel like I already had a place here in the company."

Recently Completed Projects



Puerto Rican Unity for Progress; Camden, NJ
Architect: Archi-Tecto Studio, LLC



Villanova University President's Lounge; Villanova, PA
Architect: H2L2 Architects



Wawa; Philadelphia, PA
Architect: Stantek Architecture, Inc.



A Sampling of Our Projects Under Construction

Current Clients

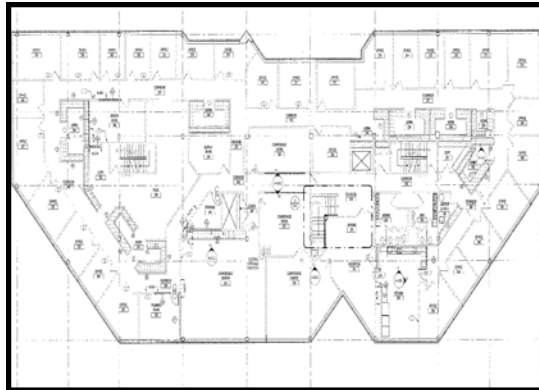
- Archdiocese of Philadelphia
- Bells Corner Hidden Forest, LLC
- Blank Aschkenasy Properties
- Bradford Plaza, L.P.
- Cedar Shopping Centers
- Delco Development, LLC
- Direct Invest USA, Inc.
- Dreher Group
- Enterprise Rent-A-Car
- Fameco Real Estate
- Federal Realty Investment Trust
- Flaster Greenberg Law Offices
- Giant Food Store
- Hamilton FC Associates
- Honda of Princeton
- Iron Mountain
- Ironwood Property Group
- Integral Nuclear PET Association
- Korman Commercial Properties
- Marx Realty
- Paoli Office Park Partners, LP
- PGW
- PNC Bank
- Princeton Porsche
- Rosedon Construction Co.
- SEPTA
- Swiss Farms
- The Robbins Companies
- Trexlertown FC Associates, LP
- Tri State Ventures, L.P.
- University City Associates
- University of Pennsylvania
- Villanova University
- WAWA, Inc.
- Willingboro Town Center
- Woodbury Presbyterian Church



Trexlertown Development ; Lehigh County, PA
Engineer: Landcore Engineering Consultants



Industrial Boulevard; Paoli, PA
Engineer: Bohler Engineers



Flaster Greenberg; Cherry Hill, NJ
Architect: Francis Cauffman



Rite Aid; Exton, PA
Architect: Stampfl Hartke Associates



Knights Road Shopping Center; Philadelphia, PA
Architect: BL Companies



SEPTA: Link Siding; Doylestown, PA
Architect: HNTB Corporation