



The Foundation

A&E Transforms Marple Crossroads

Marple Crossroads Shopping Center, located on Route 1 in Springfield and Marple Township, Delaware County, is experiencing a major expansion and renovation. Since starting the multi-phased project in March 2010, A&E has been completing several contracts for site work, construction, and tenant fit-outs for Blank Aschenasy Properties, LLC as well as new and existing retail clients. The completed shopping center will total approximately 280,000 square feet of retail space.

The plans included relocation and construction of existing tenants Jo-Ann Fabrics & Crafts and Marshalls; construction and fit-out of new retailers Burlington Coat Factory and K&G Fashion Superstore; base building and vanilla box construction of a new Walmart store; and vanilla box and construction of a new tenants Sally Beauty and Dress Barn.

The construction projects included demolition of existing interiors; installation of elevators, escalators, stairs and loading dock; building demising walls; and new exterior facade.

Site work involved storm water management; relocation of water and gas utilities; site lighting; retaining walls, paving, striping and signage; retaining walls and landscaping.



Loading Dock behind shopping center

Walmart recently awarded a contract to A&E for the fit-out of its 113,600 square foot store in the center of the retail complex.

A&E is scheduled to complete the entire project later this year. The shopping center has remained opened throughout construction.



Future Walmart



Future K&G Fashion Superstore

Commercial ♦ Education ♦ Healthcare ♦ Municipal ♦ Retail & Hospitality
Volume 16 www.aeconstruction.com Spring 2011

Pennsylvania: 152 Garrett Road, Upper Darby, PA 19082
New Jersey: 201 Haddonfield-Berlin Road, Cherry Hill, NJ 08034

P: 610-449-3152 F: 610-449 6325
P: 856-857-9333 F: 856-857-9334

Spotlight
on

RHJ ASSOCIATES, P.C.

ARCHITECTS • PLANNERS • DESIGNERS

RHJ Associates, P.C. is a full service architecture, planning and design firm with offices in King of Prussia, Pennsylvania and Wilmington, Delaware. Established in 1977, the firm provides comprehensive design services for clients in the commercial, institutional and private markets, and has a diverse portfolio of projects including: medical offices, corporate interiors, assisted living facilities, automotive dealerships, car wash facilities, retail and shopping centers, restaurants, fire houses, fitness centers, and private residences. In addition to the Architectural and Project Management services provided in-house, RHJ Associates serves as the lead professional for landscape architectural, site/civil, structural, mechanical, plumbing, electrical and fire protection engineering; interior design; kitchen design; and A/V design services. RHJ Associates has been honored with design awards from the Society of American Registered Architects as well as professional building associations and publications.

A&E and RHJ have been working together on several projects for Iron Mountain, including warehouse expansions and renovations; office fit-outs; and miscellaneous improvements to multiple facilities in Delaware, Pennsylvania and Virginia.

A&E and RHJ Associates are joining forces for the upcoming construction of an 8,000 square foot restaurant in Lionville, PA. 'Timothy's Restaurant & Bar' will occupy the majority of a 9,600 square foot pad site located in the Lionville Shopping Center at Eagleview Boulevard and Rt. 113. RHJ Associates has been working with the restaurant owners since early 2010 to develop a layout and atmosphere for the new site that complements their existing location on the riverfront in Wilmington, DE. The new restaurant design includes a large, open-space dining room and bar area with a central fire pit, private dining rooms with dedicated bar areas and covered patios for outdoor seating.



Dawn Gramley

Project Manager



Dawn Gramley started working at A&E in August of 2005. She has been in the construction field for approximately 20 years. Dawn met Tony Santora, President of A&E, while working in the construction department of a retailer that contracted Tony's former company to build its stores. Dawn and Tony worked together for approximately 6 years prior to her joining A&E. Dawn has experience as the owner, general contractor, and subcontractor. She is LEED and Infection Control Risk Assessment for Construction Activities (ICRA) certified.

Dawn is currently working on the ALDI and Bottom Dollar Foods grocery store projects in New Jersey and Philadelphia. Her past projects include a kidney dialysis center for Fresenius Medical Care, a CT/Sim for Capital Health Systems, a cardiology suite for University of Pennsylvania, a curtain wall replacement at WJH Technical Center in Atlantic City for the FAA, and Rite Aid stores.

In her free time, Dawn enjoys her family, friends, pets and especially her 4 year old son.

A&E is in the Grocery Business

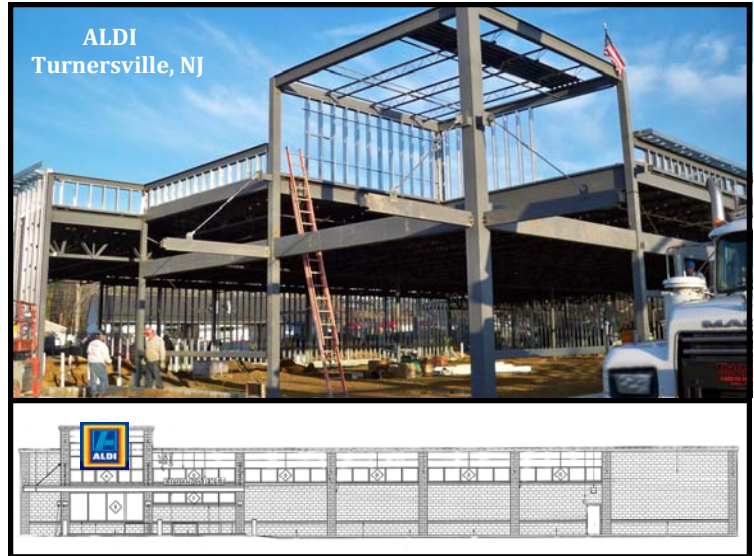
A&E Construction Co. is currently working with four grocery chains to build new stores this year.

A&E was awarded the contract by ALDI, Center Valley Division, to construct a new 17,700 square foot ALDI food store on Route 42 in Turnersville, NJ. The project includes demolishing an existing structure to make way for the single story framed building with a steel joist roof, steel columns and masonry veneer exterior. Site work involves paving, sidewalks, curbs and approaches; sewers, landscaping, lot lighting and prime signage. ALDI will be ready for business in May. A&E is getting ready to start building a second ALDI in East Rutherford, NJ.

Giant Food is expanding in northeast Philadelphia with a new 79,600 square foot Giant Food and Drugstore on Grant Avenue. This is A&E's third project with Giant. The single story masonry building will have mezzanine levels in the front and back. Site work includes structural excavation, shoring, backfilling and compacting; concrete walks, curbs and ramps. Giant expects to be open in June.

A&E is the General Contractor for a new 18,300 square foot Bottom Dollar Food, a discount grocery concept created by Food Lion LLC. It is located in the Krewstown Shopping Center in northeast Philadelphia. The plans include demolition of a portion of the existing shopping center to make way for the single story masonry structure. Site work includes asphalt paving and lot striping, curbs, bio-retention ponds, sanitary sewer, electric service, landscaping and lot lighting. Bottom Dollar Food will be completed in June.

A&E was just awarded the contract to build a stand-alone 14,600 square foot Wegman's Wine, Liquor & Beer store in the Market Place at Garden State Park in Cherry Hill, NJ that already houses a Wegman's Food Market.





A Sampling of Our Projects

Under Construction

Recently Completed

Current Clients

ALDI

Archdiocese of Philadelphia

Avalon Carpet & Tile

Bells Corner Hidden Forest, LLC

Blank Aschkenasy Properties

Bottom Dollar Food

Boys & Girls Club of America

Bradford Plaza, L.P.

Burlington Coat Factory

Cedar Shopping Centers

Delco Development, LLC

Direct Invest USA, Inc.

Fameco Real Estate

Federal Realty Investment Trust

Flaster Greenberg Law Offices

Giant Food Store

Hamilton FC Associates

Honda of Princeton

Iron Mountain

Ironwood Property Group

Korman Commercial Properties

Lilly Pulitzer

Main Line Periodontics

Marx Realty

Paoli Office Park Partners, LP

Rosedon Construction Co.

Swiss Farms

The Robbins Companies

Timothy's Restaurant

Tri State Ventures, L.P.

University of Pennsylvania

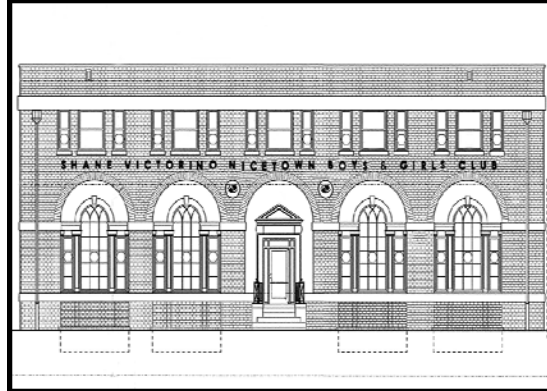
Walmart

Wawa

Wegman's

West Pottsgrove Township

Willingboro Town Center



Shane Victorino Nicetown Boys & Girls Club
Philadelphia, PA
Architect: Stephen Varenhorst Architects



4 Industrial Boulevard
Paoli, PA
Architect: Thomas E. Hall & Associates



Drummond Road Office Warehouse
Philadelphia, PA
Architect: AECOM Services of PA, Inc.



Lancaster Shopping Center
Lancaster, PA
Architect: Cowie and Associates



St. Francis Country House, Phase IV
Darby, PA
Engineer: O'Donnell & Naccarato



Main Line Periodontics
Bryn Mawr, PA
Architect: TAO